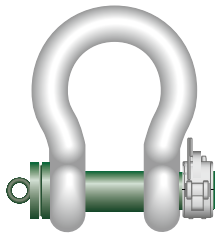


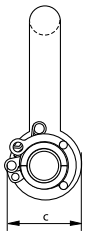
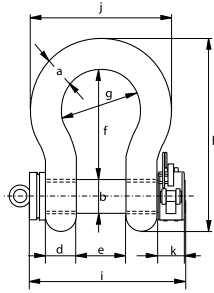


Green Pin® Locking Clamp ROV Shackle

Release ROV shackle (grade 8) with locking clamp



P-5365



- **Material:** bow and pin alloy steel, grade 8, Polar quality, quenched and tempered
- **Safety Factor:** MBL equals 6 x WLL
for shackles with WLL 120 t and up the MBL equals 5x WLL
- **Finish:** body painted white, pin painted green
- **Temperature Range:** -60°C up to +200°C
- **Certification:** 2.1 2.2 3.1 MTC^a MTC^b * LROS * CE
- **Note:** supplied without wires; design your own wiring plan

working load limit	diameter bow	diameter pin	diameter eye	width eye	width inside	length inside	width bow	length	length bolt	width	width locking clamp	weight each
t	a mm	b mm	c mm	d mm	e mm	f mm	g mm	h mm	i mm	j mm	k mm	kg
6.5	22	25	52	22	36	83	58	164	131	102	31	2.27
9.5	28	32	66	28	47	108	75	200	166	131	31	4.25
12	32	35	72	32	51	115	83	213	184	147	31	5.36
17	38	42	88	38	60	146	99	266	206	175	40	9.27
25	45	50	103	45	74	178	126	309	243	216	40	14.62
35	50	57	116	50	83	197	138	350	269	238	40	20.75
42.5	57	65	130	57	95	222	160	377	301	274	40	28.33
55	65	70	145	65	105	260	180	440	329	310	40	41
85	75	83	162	75	127	329	190	527	375	340	40	61
120	95	95	208	91	147	400	238	647	440	428	60	110
150	105	108	238	102	169	410	275	688	490	485	60	160
200	120	130	279	113	179	513	290	838	520	530	60	235
250	130	140	299	118	205	554	305	904	560	565	60	285

In inch

working load limit	diameter bow	diameter pin	diameter eye	width eye	width inside	length inside	width bow	length	length bolt	width	width locking clamp	weight each
t	a inch	b inch	c inch	d inch	e inch	f inch	g inch	h inch	i inch	j inch	k inch	lbs
6.5	7/8	1	2 1/32	7/8	1 7/16	3 9/32	2 9/32	6 7/16	5 5/32	4	1 7/32	5.00
9.5	1 1/8	1 1/4	2 19/32	1 1/8	1 7/8	4 1/4	2 15/16	7 7/8	6 17/32	5 5/32	1 7/32	9.37
12	1 1/4	1 3/8	2 13/16	1 9/32	2	4 17/32	3 9/32	8 3/8	7 1/4	5 25/32	1 7/32	11.82
17	1 1/2	1 5/8	3 1/2	1 17/32	2 11/32	5 3/4	3 29/32	10 1/2	8 1/8	6 7/8	1 9/16	20.44
25	1 3/4	2	4 1/32	1 25/32	2 29/32	7	4 15/16	12 5/32	9 19/32	8 17/32	1 9/16	32.23
35	2	2 1/4	4 9/16	1 31/32	3 9/32	7 3/4	5 7/16	13 25/32	10 19/32	9 3/8	1 9/16	45.75
42.5	2 1/4	2 9/16	5 1/8	2 1/4	3 3/4	8 3/4	6 9/32	14 13/16	11 7/8	10 25/32	1 9/16	62.5
55	2 1/2	2 3/4	5 23/32	2 9/16	4 1/8	10 1/4	7 3/32	17 11/32	12 15/16	12 3/16	1 9/16	90.4
85	3	3 1/4	6 11/32	2 15/16	5	12 15/16	7 1/2	20 3/4	14 3/4	13 3/8	1 9/16	134.5
120	3 3/4	3 3/4	8 3/16	3 19/32	5 25/32	15 3/4	9 3/8	25 1/2	17 11/32	16 7/8	2 11/32	243
150	4 1/8	4 1/4	9 3/8	4	6 5/8	16 5/32	10 13/16	27 3/32	19 5/16	19 1/8	2 11/32	353
200	4 23/32	5 1/8	11	4 7/16	7 1/32	20 3/16	11 7/16	33	20 1/2	20 7/8	2 11/32	518
250	5 1/8	5 1/2	11 25/32	4 5/8	8 3/32	21 13/16	12	35 19/32	22 1/32	22 1/4	2 11/32	628

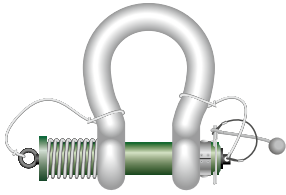
CAD RFID

* For shackles ≥ WLL 150 t



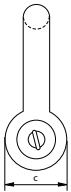
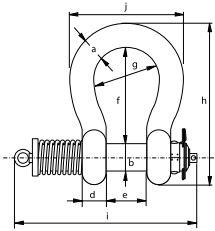
Green Pin® Spring Release ROV Shackle

Release ROV shackle (grade 8) with spring



- **Material:** bow and pin alloy steel, grade 8, Polar quality, quenched and tempered
- **Safety factor:** MBL equals 5 x WLL
- **Finish:** body painted white, pin painted green
- **Temperature Range:** -40°C up to +200°C
- **Certification:** 2.1 2.2 3.1 MTC^a LROS^{*} CE
- **Note:** for in-line use only.
this shackle is assembled with wire rope slings and monkey's fist for size starting from WLL 42.5 up to and including 150 t a special compression tool (sold separately) is required to assemble the shackle.

P-5367



working load limit	diameter bow	diameter pin	diameter eye	width eye	width inside	length inside	width bow	length	length bolt	width	weight each
t	a mm	b mm	c mm	d mm	e mm	f mm	g mm	h mm	i mm	j mm	kg
12	32	35	72	32	51	115	83	201	291	147	5.24
13.5	35	38	80	35	57	133	92	227	301	162	7
17	38	42	88	38	60	146	99	249	360	175	9.25
25	45	50	103	45	74	178	126	300	370	216	15.5
35	50	57	116	50	83	197	138	334	400	238	20.4
42.5	57	65	130	57	95	222	160	377	460	274	39
55	65	70	145	65	105	260	180	433	490	310	42
85	75	83	162	75	127	329	190	527	587	340	67
120	95	95	208	91	147	399	238	646	687	428	123
150	105	108	238	102	169	410	275	688	727	485	168

In inch

working load limit	diameter bow	diameter pin	diameter eye	width eye	width inside	length inside	width bow	length	length bolt	width	weight each
t	a inch	b inch	c inch	d inch	e inch	f inch	g inch	h inch	i inch	j inch	lbs
12	1 1/4	1 3/8	2 13/16	1 9/32	2	4 17/32	3 9/32	7 29/32	11 1/2	5 25/32	11.55
13.5	1 3/8	1 1/2	3 5/32	1 3/8	2 1/4	5 1/4	3 5/8	8 15/16	11 7/8	6 11/32	15.43
17	1 1/2	1 5/8	3 1/2	1 17/32	2 11/32	5 3/4	3 29/32	9 13/16	14 5/32	6 7/8	20.39
25	1 3/4	2	4 1/32	1 25/32	2 29/32	7	4 15/16	11 13/16	14 9/16	8 17/32	34.2
35	2	2 1/4	4 9/16	1 31/32	3 9/32	7 3/4	5 7/16	13 5/32	15 3/4	9 3/8	45
42.5	2 1/4	2 9/16	5 1/8	2 1/4	3 3/4	8 3/4	6 9/32	14 13/16	18 1/8	10 25/32	86
55	2 1/2	2 3/4	5 23/32	2 9/16	4 1/8	10 1/4	7 3/32	17 3/32	19 5/16	12 3/16	92.6
85	3	3 1/4	6 11/32	2 15/16	5	12 15/16	7 1/2	20 3/4	23 1/8	13 3/8	147.7
120	3 3/4	3 3/4	8 3/16	3 19/32	5 25/32	15 23/32	9 3/8	25 7/16	27 1/32	16 7/8	271
150	4 1/8	4 1/4	9 3/8	4	6 5/8	16 5/32	10 13/16	27 3/32	28 19/32	19 1/8	370

CAD RFID

* For shackles ≥ WLL 150 t

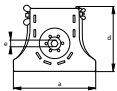
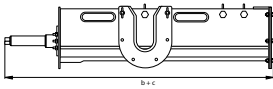


Green Pin® Compression Tool

Tool to wind up spring release shackle (sizes WLL 42.5T and up)



P-5368



- **Material:** mild steel
- **Finish:** black painted
- **Note:** required for ROV spring release shackle (type P-5367), for sizes WLL 42.5 t and up
- **Certification:** 2.1

for shackle WLL	diameter bow	diameter pin	width	length closed position	length opened position	height	width	weight each
t	a mm	b mm	a mm	b mm	c mm	d mm	e mm	kg
42.5	57	65	300	1000	1500	225	24	34
55	65	70						
85	75	83						
120	95	95	340	1100	1750	285	24	42
150	105	108						

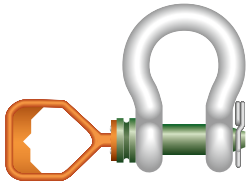
In inch

for shackle WLL	diameter bow	diameter pin	width	length closed position	length opened position	height	width	weight each
t	a inch	b inch	a inch	b inch	c inch	d inch	e inch	lbs
42.5	2 ¹ / ₄	2 ⁹ / ₁₆	11 ¹³ / ₁₆	39 ³ / ₈	59 ¹ / ₁₆	8 ⁷ / ₈	¹⁵ / ₁₆	75
55	2 ¹ / ₂	2 ³ / ₄						
85	3	3 ¹ / ₄						
120	3 ³ / ₄	3 ³ / ₄	13 ³ / ₈	43 ⁵ / ₁₆	68 ²⁹ / ₃₂	11 ¹ / ₄	¹⁵ / ₁₆	92.6
150	4 ¹ / ₈	4 ¹ / ₄						

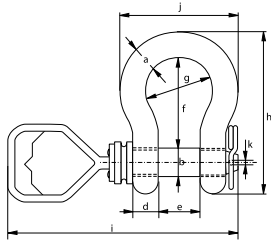


Green Pin® Tapered Pin ROV Shackle D

Release & retrieve ROV shackle (grade 8) with tapered pin and D-handle



P-5361D



- **Material:** bow and pin alloy steel, grade 8, polar quality, quenched and tempered
- **Safety factor:** MBL equals 5 x WLL
- **Finish:** body painted white, pin painted green
- **Temperature Range:** -60°C up to +200°C
- **Certification:** 2.1 2.2 3.1 MTC^a CE
- **Note:** supplied without wires; design your own wiring plan

working load limit	diameter bow	diameter pin	diameter eye	width eye	width inside	length inside	width bow	length	length bolt	width	diameter clamp	weight each
t	a mm	b mm	c mm	d mm	e mm	f mm	g mm	h mm	i mm	j mm	k mm	kg
6.5	22	25	52	22	36	83	58	144	345	102	3.5	1.50
9.5	28	32	66	28	47	108	75	185	381	131	5.5	3.16
12	32	35	72	32	51	115	83	201	393	147	6.5	4.31
17	38	42	88	38	60	146	99	249	417	175	8.5	7.43
25	45	50	103	45	74	178	126	300	464	216	8.5	12.84
35	50	57	111	50	83	197	138	331	484	238	8.5	18.15
42.5	57	65	130	57	95	222	160	377	516	274	7.5	26.29
55	65	70	145	65	105	260	180	433	545	310	7.5	37.60

In inch



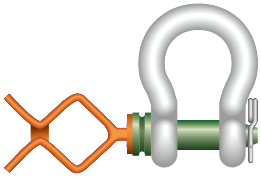
working load limit	diameter bow	diameter pin	diameter eye	width eye	width inside	length inside	width bow	length	length bolt	width	diameter clamp	weight each
t	a inch	b inch	c inch	d inch	e inch	f inch	g inch	h inch	i inch	j inch	k inch	lbs
6.5	7/8	1	2 1/16	7/8	1 7/16	3 9/32	2 9/32	5 21/32	13 19/32	4 1/32	1/8	3.31
9.5	1 1/8	1 1/4	2 19/32	1 1/8	1 7/8	4 1/4	2 15/16	7 9/32	15	5 5/32	7/32	6.97
12	1 1/4	1 3/8	2 27/32	1 9/32	2	4 17/32	3 9/32	7 29/32	15 15/32	5 25/32	1/4	9.49
17	1 1/2	1 5/8	3 15/32	1 17/32	2 11/32	5 3/4	3 29/32	9 13/16	16 13/32	6 7/8	11/32	16.37
25	1 3/4	2	4 1/16	1 25/32	2 29/32	7	4 15/16	11 13/16	18 9/32	8 1/2	11/32	28.31
35	2	2 1/4	4 3/8	1 31/32	3 9/32	7 3/4	5 7/16	13 1/32	19 1/16	9 3/8	11/32	40.01
42.5	2 1/4	2 9/16	5 1/8	2 1/4	3 3/4	8 3/4	6 9/32	14 27/32	20 5/16	10 25/32	9/32	57.96
55	2 1/2	2 3/4	5 23/32	2 9/16	4 1/8	10 1/4	7 9/32	17 1/16	21 15/32	12 7/32	9/32	82.89

INFO



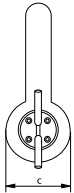
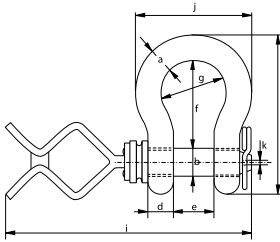
Green Pin® Tapered Pin ROV Shackle F

Release & retrieve ROV shackle (grade 8) with tapered screw pin and Fishtail handle



- **Material:** bow and pin alloy steel, grade 8, polar quality, quenched and tempered
- **Safety factor:** MBL equals 5 x WLL
- **Finish:** body painted white, pin painted green
- **Temperature Range:** -60°C up to +200°C
- **Certification:** 2.1 2.2 3.1 MTC® CE
- **Note:** supplied without wires; design your own wiring plan

P-5361F



working load limit	diameter bow	diameter pin	diameter eye	width eye	width inside	length inside	width bow	length	length bolt	width	diameter	weight each
t	a mm	b mm	c mm	d mm	e mm	f mm	g mm	h mm	i mm	j mm	k mm	kg
6.5	22	25	52	22	36	83	58	144	419	102	3.5	1.50
9.5	28	32	66	28	47	108	75	185	455	131	5.5	3.16
12	32	35	72	32	51	115	83	201	467	147	6.5	4.31
17	38	42	88	38	60	146	99	249	491	175	8.5	7.43
25	45	50	103	45	74	178	126	300	538	216	8.5	12.84
35	50	57	111	50	83	197	138	331	558	238	8.5	18.15
42.5	57	65	130	57	95	222	160	377	590	274	7.5	26.29
55	65	70	145	65	105	260	180	433	619	310	7.5	37.60

In inch

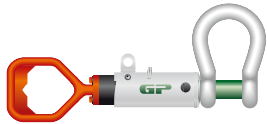
working load limit	diameter bow	diameter pin	diameter eye	width eye	width inside	length inside	width bow	length	length bolt	width	diameter	weight each
t	a inch	b inch	c inch	d inch	e inch	f inch	g inch	h inch	i inch	j inch	k inch	lbs
6.5	$\frac{7}{8}$	1	$2\frac{1}{16}$	$\frac{7}{8}$	$1\frac{7}{16}$	$3\frac{9}{32}$	$2\frac{9}{32}$	$5\frac{21}{32}$	$16\frac{1}{2}$	$4\frac{1}{32}$	$\frac{1}{8}$	3.31
9.5	$1\frac{1}{8}$	$1\frac{1}{4}$	$2\frac{19}{32}$	$1\frac{1}{8}$	$1\frac{7}{8}$	$4\frac{1}{4}$	$2\frac{15}{16}$	$7\frac{9}{32}$	$17\frac{29}{32}$	$5\frac{5}{32}$	$\frac{7}{32}$	6.97
12	$1\frac{1}{4}$	$1\frac{3}{8}$	$2\frac{27}{32}$	$1\frac{9}{32}$	2	$4\frac{17}{32}$	$3\frac{9}{32}$	$7\frac{29}{32}$	$18\frac{3}{8}$	$5\frac{25}{32}$	$\frac{1}{4}$	9.49
17	$1\frac{1}{2}$	$1\frac{5}{8}$	$3\frac{15}{32}$	$1\frac{17}{32}$	$2\frac{11}{32}$	$5\frac{3}{4}$	$3\frac{29}{32}$	$9\frac{13}{16}$	$19\frac{11}{32}$	$6\frac{7}{8}$	$\frac{11}{32}$	16.37
25	$1\frac{3}{4}$	2	$4\frac{1}{16}$	$1\frac{25}{32}$	$2\frac{29}{32}$	7	$4\frac{15}{16}$	$11\frac{13}{16}$	$21\frac{3}{16}$	$8\frac{1}{2}$	$\frac{11}{32}$	28.31
35	2	$2\frac{1}{4}$	$4\frac{3}{8}$	$1\frac{31}{32}$	$3\frac{9}{32}$	$7\frac{3}{4}$	$5\frac{7}{16}$	$13\frac{1}{32}$	$21\frac{31}{32}$	$9\frac{3}{8}$	$\frac{11}{32}$	40.01
42.5	$2\frac{1}{4}$	$2\frac{9}{16}$	$5\frac{1}{8}$	$2\frac{1}{4}$	$3\frac{3}{4}$	$8\frac{3}{4}$	$6\frac{9}{32}$	$14\frac{27}{32}$	$23\frac{7}{32}$	$10\frac{25}{32}$	$\frac{9}{32}$	57.96
55	$2\frac{1}{2}$	$2\frac{3}{4}$	$5\frac{23}{32}$	$2\frac{9}{16}$	$4\frac{1}{8}$	$10\frac{1}{4}$	$7\frac{9}{32}$	$17\frac{1}{16}$	$24\frac{3}{8}$	$12\frac{7}{32}$	$\frac{9}{32}$	82.89

INFO



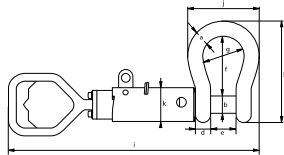
Green Pin® Guided Pin ROV Shackle D

Release & retrieve ROV shackle (grade 8) with guiding tube and D-handle



- **Material:** shackle body and pin alloy steel, grade 8, polar quality, quenched and tempered
- **Safety factor:** MBL equals 5 x WLL
- **Finish:** body painted white, pin painted green
- **Temperature Range:** -60°C up to +200°C
- **Certification:** 2.1 2.2 3.1 MTC^a CE

P-5362D



working load limit	diameter bow	diameter pin	diameter eye	width eye	width inside	length inside	width bow	length	length bolt		width	guide diameter	weight each
	a	b	c	d	e	f	g	h	close	open			
t	mm	mm	mm	mm	mm	mm	mm	mm	i		j	k	kg
12	32	35	72	32	51	115	83	201	569	652	147	83	10
17	38	42	88	38	60	146	99	249	612	710	175	83	14
25	45	50	103	45	74	178	126	300	683	802	216	83	19
35	50	57	111	50	83	197	138	331	711	844	238	83	24
42.5	57	65	130	57	95	222	160	377	785	937	274	102	34
55	65	70	145	65	105	260	180	433	824	994	310	102	45



In inch

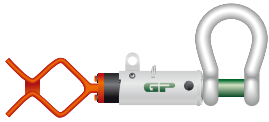
working load limit	diameter bow	diameter pin	diameter eye	width eye	width inside	length inside	width bow	length	length bolt		width	guide diameter	weight each
	a	b	c	d	e	f	g	h	close	open			
t	inch	inch	inch	inch	inch	inch	inch	inch	i		j	k	lbs
12	1 1/4	1 3/8	2 27/32	1 1/4	2	4 17/32	3 9/32	7 29/32	22 13/32	25 21/32	5 25/32	3 9/32	22
17	1 1/2	1 5/8	3 15/32	1 1/2	2 3/8	5 3/4	3 29/32	9 13/16	24 3/32	27 15/16	6 7/8	3 9/32	31
25	1 3/4	2	4 1/16	1 25/32	2 29/32	7	4 31/32	11 13/16	26 7/8	31 9/16	8 1/2	3 9/32	42
35	2	2 1/4	4 3/8	1 31/32	3 9/32	7 3/4	5 7/16	13 1/32	28	33 7/32	9 3/8	3 9/32	53
42.5	2 1/4	2 9/16	5 1/8	2 1/4	3 3/4	8 3/4	6 5/16	14 27/32	30 29/32	36 7/8	10 25/32	4 1/32	75
55	2 1/2	2 3/4	5 23/32	2 9/16	4 1/8	10 1/4	7 3/32	17 1/16	32 7/16	39 1/8	12 7/32	4 1/32	99

INFO



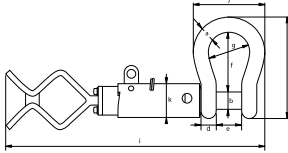
Green Pin® Guided Pin ROV Shackle F

Release & retrieve ROV shackle (grade 8) with guiding tube and Fishtail handle



- **Material:** shackle body and pin alloy steel, grade 8, polar quality, quenched and tempered
- **Safety factor:** MBL equals 5 x WLL
- **Finish:** body painted white, pin painted green
- **Temperature Range:** -60°C up to +200°C
- **Certification:** 2.1 2.2 3.1 MTC[®] CE

P-5362F



working load limit	diameter bow	diameter pin	diameter eye	width eye	width inside	length inside	width bow	length	length bolt		width	guide diameter	weight each
									close	open			
t	a	b	c	d	e	f	g	h	i		j	k	kg
12	32	35	72	32	51	115	83	201	643	726	147	83	10
17	38	42	88	38	60	146	99	249	686	784	175	83	14
25	45	50	103	45	74	178	126	300	757	876	216	83	19
35	50	57	111	50	83	197	138	331	785	918	238	83	24
42.5	57	65	130	57	95	222	160	377	859	1011	274	102	34
55	65	70	145	65	105	260	180	433	898	1068	310	102	45

In inch

working load limit	diameter bow	diameter pin	diameter eye	width eye	width inside	length inside	width bow	length	length bolt		width	guide diameter	weight each
									close	open			
t	a	b	c	d	e	f	g	h	i		j	k	lbs
12	1 1/4	1 3/8	2 27/32	1 1/4	2	4 17/32	3 9/32	7 29/32	25 5/16	28 19/32	5 25/32	3 9/32	22
17	1 1/2	1 5/8	3 15/32	1 1/2	2 3/8	5 3/4	3 29/32	9 13/16	27	30 7/8	6 7/8	3 9/32	31
25	1 3/4	2	4 1/16	1 25/32	2 29/32	7	4 31/32	11 13/16	29 13/16	34 1/2	8 1/2	3 9/32	42
35	2	2 1/4	4 3/8	1 31/32	3 9/32	7 3/4	5 7/16	13 1/32	30 29/32	36 5/32	9 3/8	3 9/32	53
42.5	2 1/4	2 9/16	5 1/8	2 1/4	3 3/4	8 3/4	6 5/16	14 27/32	33 13/16	39 13/16	10 25/32	4 1/32	75
55	2 1/2	2 3/4	5 23/32	2 9/16	4 1/8	10 1/4	7 3/32	17 1/16	35 11/32	42 1/16	12 7/32	4 1/32	99

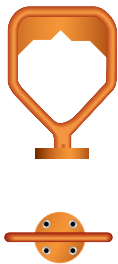
INFO



Green Pin® D-handle

Accessory for Green Pin® ROV Shackle

- **Material:** cast steel
- **Finish:** painted orange
- **Certification:** 2.1

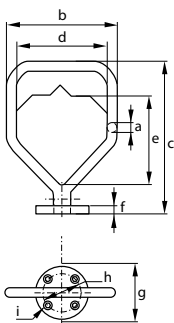


diameter	width	length	width	length inside	thickness	diameter	diameter	diameter	weight each
a	b	c	d	e	f	g	h	i	kg
19	153	215	115	110	10	70	48	8.5	1.70

In inch

diameter	width	length	width	length inside	thickness	diameter	diameter	diameter	weight each
a	b	c	d	e	f	g	h	i	lbs
$\frac{3}{4}$	$6 \frac{1}{32}$	$8 \frac{15}{32}$	$4 \frac{17}{32}$	$4 \frac{11}{32}$	$\frac{13}{32}$	$2 \frac{3}{4}$	$1 \frac{7}{8}$	$\frac{11}{32}$	3.75

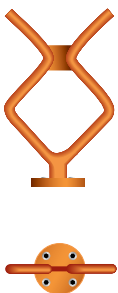
P-5396D



Green Pin® Fishtail handle

Accessory for Green Pin® ROV Shackle

- **Material:** cast steel
- **Finish:** painted orange
- **Certification:** 2.1



diameter	width	length	width	length inside	thickness	diameter	diameter	diameter	weight each
a	b	c	d	e	f	g	h	i	kg
19	178	289	21	133	10	70	48	8.5	1.92

In inch

diameter	width	length	width	length inside	thickness	diameter	diameter	diameter	weight each
a	b	c	d	e	f	g	h	i	lbs
$\frac{3}{4}$	7	$11 \frac{3}{8}$	$\frac{13}{16}$	$5 \frac{1}{4}$	$\frac{13}{32}$	$2 \frac{3}{4}$	$1 \frac{7}{8}$	$\frac{11}{32}$	4.23

P-5396F

