

# THIMBLES

---



## Applications

Thimbles are used to protect steel wire rope, fibre rope or synthetic rope. They are available in various models and sizes. All indicated types of thimbles in this catalogue can be used in combination with the above mentioned types of ropes.

## Range

To complement the Green Pin® assortment, Van Beest offers a wide range of thimbles, from standardized models to various types of commercial thimbles.

## Design

Thimbles can be cold-rolled, hot-rolled or die-cast, depending on the specific type of thimble.

## Finish

The finish can be self coloured, painted, electro-galvanized or hot dipped galvanized.

## Certification

Specific details of certificate availability can be found on each product page. Please verify your certification requirements at the time of order.

## Instructions for use

Thimbles must be regularly inspected in accordance with the standards given in the country of use. This is required because the products in use may be affected by wear, misuse, overloading which may lead to deformation and/or alteration of the steel structure.

Make sure that the (wire) rope fits properly into the groove of the thimble you use. The nominal size of the thimble represents the diameter of the (wire) rope for which it is intended to be used. If there is no thimble available with a nominal size that meets the size of your (wire) rope, the next larger size of thimble must be used.

Before use, check if the thimble is free from impurities, sharp edges, cracks or other irregularities which may damage the wire rope and therefore affect the performance of the wire rope.

C

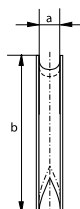
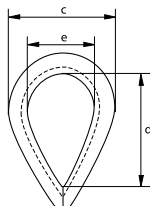
## Thimbles

### Standard commercial

- **Material:** mild steel
- **Finish:** electro-galvanized
- **Certification:** 2.1



E-6110



diameter rope	width groove	length	width	length inside	width inside	weight per 100 pcs
mm	a mm	b mm	c mm	d mm	e mm	kg
3	3	24	18	15	10	0.4
4	4	25	19	16	11	0.5
5	5	31	22	22	16	0.8
6	6	37	29	26	19	1.4
8	8	51	38	34	24	2.8
9	9	57	42	38	29	3
10	10	64	44	42	32	4.8
11	11	70	51	48	35	7.5
12	12	76	57	51	38	8
14	14	82	60	57	40	10
16	16	89	64	60	42	15
18	18	102	69	67	45	22
20	20	115	79	76	51	25
22	22	127	89	83	54	32
24	24	140	102	88	64	46
26	26	152	105	102	68	66
28	28	165	115	110	73	77
30	30	178	121	115	79	80
32	32	203	133	140	93	130

C

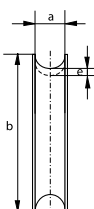
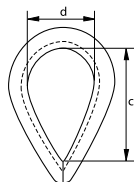
## Thimbles

### Heavy duty stub-end

- **Material:** mild steel
- **Finish:** hot dipped galvanized
- **Certification:** 2.1



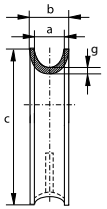
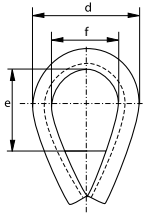
G-6120



diameter rope	width groove	length	length inside	width inside	thickness back	weight per 100 pcs
mm	a mm	b mm	c mm	d mm	e mm	kg
8	9	51	37	23	4	6
10	11	64	53	31	4	7
12	13	76	60	36	5	14
14	15	89	68	46	6	22
16	17	102	79	51	6	24
18	19	114	90	55	8	43
20	21	127	98	62	9	65
22	23	140	112	67	10	93
24	25	152	119	72	10	102
28	29	178	135	82	10.5	135
32	33	203	163	102	10.5	162
36	37	229	185	117	12	363
40	42	254	205	122	12	376
44	46	280	220	133	15	608
50	52	305	221	143	20	960
56	58	356	252	163	20	1400
64	67	407	286	185	20	1700



G-6128



## Thimbles

### Heavy duty stub-end reinforced with welded fillet plate

- **Material:** mild steel
- **Finish:** hot dipped galvanized reinforced with a welded fillet plate
- **Certification:** 2.1

width groove	width overall	length	width	length inside	width inside	thickness back	weight per piece
a mm	b mm	c mm	d mm	e mm	f mm	g mm	kg
35	55	220	150	100	80	10	3.2
40	65	245	160	120	90	12	5.1
50	80	290	200	125	110	16	9.2
62	100	360	250	160	140	20	17.4
72	115	390	265	175	160	20	19.4
85	125	470	300	245	190	20	29
100	150	540	370	290	200	25	39
115	165	570	380	300	210	25	52

For shackle

group	width groove								
	a mm								
	35	40	50	62	72	85	100	115	
G-4161	17, 25	25	35, 42.5	55	85				
G-4163	17, 25	25	35, 42.5	55	85				
G-4151	17, 25	25	35, 42.5	55	85				
G-4153	17, 25	25	35, 42.5	55	85				
P-6036						120, 150	150, 200		
G-6038						120, 150	150, 200		
P-6033	30	30	40, 55	75	125	125			
G-5263	30, 40	40		85	120	150, 175	175		
G-5163	17, 25	25	35, 42.5	55	85				
P-6031						120, 150	150, 200		
G-4263	4.75 ~ 25	6.5 ~ 25	9.5 ~ 30	16 ~ 55	25 ~ 75	30 ~ 75	55, 75	75	
P-5363	17, 25	25	35, 42.5	55	85				
P-5365	17, 25	25	35, 42.5	55	85	120, 150	150, 200		
P-5367	17, 25	25	35, 42.5	55	85	120, 150	150		
G-4164	17, 25	25							
G-4154	17, 25	25							
G-4169	17								
G-4159	17								

C

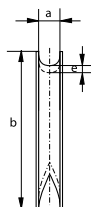
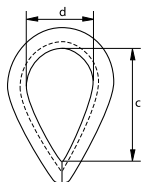
# Thimbles

Generally to DIN 6899 (B)



- **Material:** mild steel
- **Standard:** generally to DIN 6899 (B)
- **Finish:** thimbles for rope diameters up to and including 6 mm are electro-galvanized, other diameters are hot dipped galvanized
- **Certification:** 2.1

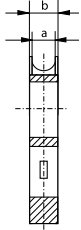
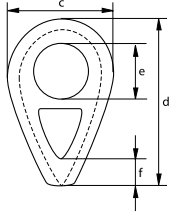
E-6131  
G-6131



diameter rope	width groove	length	length inside	width inside	thickness back	weight per 100 pcs
mm	a mm	b mm	c mm	d mm	e mm	kg
2.5	3	22	19	12	1.6	0.6
3.5	4	26	21	13	1.6	0.8
4	5	32	23	14	1.9	1
5	6	38	25	16	2.4	2
6	7	44	28	18	2.4	2
7	8	51	32	20	2.8	2.7
9	10	57	38	24	3.1	4.1
11	12	64	45	28	3.3	6.9
13	13	70	48	30	3.3	7.2
13	14	76	51	32	3.7	10.2
15	16	83	58	36	3.8	16.4
16	17	89	61	38	4.7	19
17	18	95	64	40	4.7	20.3
18	20	102	72	45	5.7	27.3
20	22	114	80	50	5.7	30.8
22	24	127	90	56	6.5	44.8
24	26	140	99	62	6.8	59.2
26	28	152	112	70	8	72
28	30	165	120	75	8	104
30	32	178	128	80	8	115
32	34	203	152	95	8.5	153
34	36	216	160	100	8.5	176
36	38	229	176	110	8.5	176
38	40	241	184	115	10.5	292
40	42	254	192	120	10.5	320
42	45	305	240	150	10.5	364
47	50	360	265	160	12	535
57	60	380	275	170	12	790
63	65	420	300	180	13	830
72	75	460	350	200	15	1200
87	90	500	370	210	18	2600
97	100	550	380	220	20	3050



S-6134



# Thimbles

According to DIN 3091

- **Material:** cast mild steel, (GTW 40)
- **Standard:** according to DIN 3091
- **Finish:** self coloured
- **Certification:** 2.1
- **Note:** the diameter (e) of the thimble for diameter wire rope 72 mm is 140 mm

diameter rope	width groove	width overall	width	length	diameter	length	weight per 100 pcs
mm	a mm	b mm	c mm	d mm	e mm	f mm	kg
8	9	15	40	66	14	-	18
10	11	17.5	50	82	18	-	32
12	13	20	60	98	21	-	52
14	16	23.5	70	114	25	-	80
16	18	26	80	130	28	16	90
18	20	28.5	90	145	31	18	121
20	22	31	100	161	35	20	161
22	24	33.5	110	177	38	22	211
24	26	36	120	193	41	24	271
26	29	39.5	130	209	44	26	355
28	31	42	140	224	47	28	420
32	35	47	160	256	53	32	630
36	40	53	180	288	59	36	884
40	44	58	200	320	65	40	1100
44	48	63	220	352	70	44	1500
48	53	69	240	384	76	48	2000
52	57	74	260	416	81	52	2500
56	62	80	280	448	86	56	3200
64	70	90	320	512	95	64	4600
72	79	101	360	576	140	72	6600

C

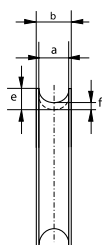
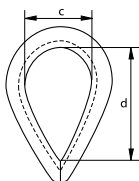
# Thimbles

Generally to DIN 3090



- **Material:** mild steel
- **Standard:** generally to DIN 3090
- **Finish:** for diameter 4 and 6 mm electro-galvanized  
other diameters hot dipped galvanized
- **Certification:** 2.1

E-6135  
G-6135



diameter wire rope	width groove	width overall	width inside	length inside	thickness	thickness back	weight per 100 pcs
mm	a mm	b mm	c mm	d mm	e mm	f mm	kg
4	5	9	10	20	5.1	2.1	1.4
6	7	12	15	30	7.1	2.6	3
8	9	13	20	40	11	4	7.1
10	11	16	25	50	14	5	17
12	13	19	30	60	16	6	24
14	16	22	35	70	17	7	31
16	18	25	40	80	19	8	50
18	20	27	45	90	21	9	62
20	22	32	50	100	23	10	90
22	24	33	55	110	24	10	100
24	26	37	60	120	27	11	130
26	29	46	65	130	30	12	220
28	31	50	70	140	33	12	240
32	35	55	80	160	38	14	216
36	40	60	90	180	42	16	430
40	44	65	100	200	46	18	570
44	48	70	110	220	53	20	850
48	53	75	120	240	58	22	1120
52	57	80	130	260	64	25	1530
56	62	85	140	280	67	25	2148
60	66	90	150	300	70	25	2300
64	70	95	160	320	78	30	3500
68	75	100	170	340	81	30	3700
72	79	105	180	360	84	30	4100
76	84	115	190	380	87	30	4600
80	88	120	200	400	90	30	5400



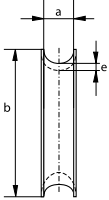
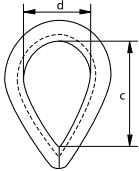
# Thimbles

Generally to EN 13411-1

- **Material:** mild steel
- **Standard:** generally to EN 13411-1 formerly BS 464
- **Finish:** hot dipped galvanized
- **Certification:** 2.1



G-6170



diameter rope		width groove	length	length inside	width inside	thickness back	weight per 100 pcs
inch	mm	a mm	b mm	c mm	d mm	e mm	kg
<sup>3</sup> / <sub>16</sub>	5	5.5	44	28	19	3	3.5
<sup>1</sup> / <sub>4</sub>	7	6	48	30	20	3.5	2.8
<sup>5</sup> / <sub>16</sub>	8	8	54	33	22	4	5.7
<sup>3</sup> / <sub>8</sub>	10	10	64	38	25	4.8	8
<sup>7</sup> / <sub>16</sub>	11	13	73	41	29	4.8	14.2
<sup>1</sup> / <sub>2</sub>	13	14	80	44	32	5.6	18
<sup>9</sup> / <sub>16</sub>	15	15	80	44	32	5.6	18.9
<sup>5</sup> / <sub>8</sub>	16	17	98	59	41	7.9	22.4
<sup>11</sup> / <sub>16</sub>	17	19	108	67	44	7.9	39.7
<sup>3</sup> / <sub>4</sub>	19	20	124	73	51	9.5	45.6
<sup>13</sup> / <sub>16</sub>	21	21	124	73	51	9.5	62.4
<sup>7</sup> / <sub>8</sub>	22	23	133	83	57	9.5	61.5
<sup>15</sup> / <sub>16</sub>	24	25	146	92	64	10.3	106
1	25	27	162	108	70	10.3	97.3
1 <sup>1</sup> / <sub>8</sub>	28	29	178	111	76	12.7	151
1 <sup>1</sup> / <sub>4</sub>	32	33	197	133	95	12.7	204
1 <sup>3</sup> / <sub>8</sub>	35	38	229	152	105	15.9	318
1 <sup>1</sup> / <sub>2</sub>	38	41	254	165	114	17.5	363
1 <sup>5</sup> / <sub>8</sub>	42	46	254	165	114	17.5	499
1 <sup>3</sup> / <sub>4</sub>	45	51	286	178	127	25.4	556
1 <sup>7</sup> / <sub>8</sub>	47	60	318	191	133	28.6	-
2	50	64	330	203	140	28.6	-
2 <sup>1</sup> / <sub>8</sub>	54	64	330	203	140	28.6	-
2 <sup>1</sup> / <sub>4</sub>	57	67	356	216	146	30.2	-
2 <sup>1</sup> / <sub>2</sub>	65	70	413	241	159	31.8	-
2 <sup>3</sup> / <sub>4</sub>	70	86	502	273	203	41.3	-

C

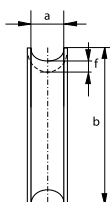
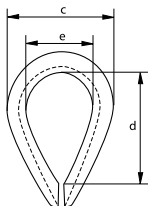
# Thimbles

Generally to US Fed. Spec. FF-T-276b type III

- **Material:** mild steel
- **Standard:** generally to US Federal Specification FF-T-276b type III and generally to EN 13411-1
- **Finish:** hot dipped galvanized
- **Certification:** 2.1



G-6142



diameter rope	width groove	length	width	length inside	width inside	thickness back	weight per 100 pcs
mm	a mm	b mm	c mm	d mm	e mm	f mm	kg
6	7	55.5	38	41	22	1.6	2.7
8	9	63.5	46	47.5	27	2	5.1
9	10	73	54	54	28.5	2.8	9.1
11	12	82.5	60	60	32	3.2	13.9
13	13.5	92	70	70	38	3.6	19.9
14	15	92	68	70	38	3.6	20.5
16	16.5	108	79	82.5	44.5	4	29.8
19	20	127	97	95	51	5.5	60.8
22	24	140	108	108	57	5.5	80.4
25	27	156	125	114	63.5	6.3	109
28 - 32	30	178	149	130	73	6.3	147
32 - 35	33	205	173	159	89	12.7	366
35 - 38	36.5	229	181	165	89	12.7	478
41	43.5	286	206	203	102	12.7	731
45	47	310	216	229	114	12.7	778
48 - 51	50	384	264	305	152	12.7	1150
57	59.5	435	302	356	178	12.7	1935
64	66	464	311	378	178	19	2640
76	78.5	514	356	419	200	19	3850

In inch

diameter rope	width groove	length	width	length inside	width inside	thickness back	weight per 100 pcs
inch	a inch	b inch	c inch	d inch	e inch	f inch	lbs
1/4	9/32	2 3/16	1 1/2	1 5/8	7/8	1/16	5.9
5/16	11/32	2 1/2	1 13/16	1 7/8	1 1/16	5/64	11.2
3/8	13/32	2 7/8	2 1/8	2 1/8	1 1/8	7/64	20.1
7/16	15/32	3 1/4	2 3/8	2 3/8	1 1/4	1/8	30.6
1/2	17/32	3 5/8	2 3/4	2 3/4	1 1/2	9/64	43.9
9/16	19/32	3 5/8	2 11/16	2 3/4	1 1/2	9/64	45.2
5/8	21/32	4 1/4	3 1/8	3 1/4	1 3/4	5/32	65.7
3/4	25/32	5	3 13/16	3 3/4	2	7/32	134
7/8	15/16	5 1/2	4 1/4	4 1/4	2 1/4	7/32	177
1	1 1/16	6 1/8	4 15/16	4 1/2	2 1/2	1/4	241
1 1/8 - 1 1/4	1 3/16	7	5 7/8	5 1/8	2 7/8	1/4	324
1 1/4 - 1 3/8	1 5/16	8 1/16	6 13/16	6 1/4	3 1/2	1/2	807
1 3/8 - 1 1/2	1 7/16	9	7 1/8	6 1/2	3 1/2	1/2	1054
1 5/8	1 23/32	11 1/4	8 1/8	8	4	1/2	1612
1 3/4	1 27/32	12 3/16	8 1/2	9	4 1/2	1/2	1715
1 7/8 - 2	1 31/32	15 1/8	10 3/8	12	6	1/2	2535
2 1/4	2 11/32	17 1/8	11 7/8	14	7	1/2	4266
2 1/2	2 19/32	18 1/4	12 1/4	14 7/8	7	3/4	5820
3	3 3/32	20 1/4	14	16 1/2	7 7/8	3/4	8488



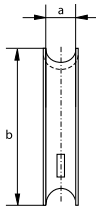
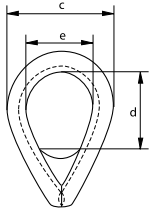


# Thimbles

## Pennant line type



G-6151



- **Material:** mild steel
- **Finish:** hot dipped galvanized produced with a welded fillet plate
- **Certification:** 2.1

diameter wire rope	width groove	length	width	length inside	width inside	weight each
mm	a mm	b mm	c mm	d mm	e mm	kg
16	17	102	75	50	50	0.4
18	19	114	85	50	53	0.5
20	21	127	100	60	60	0.8
22	23	140	110	60	65	0.9
24	25	152	115	70	70	1
28	30	178	135	75	80	1.7
30	33	203	155	80	100	2.5
36	38	229	175	110	115	4
40	41	254	190	120	120	4.5
44	46	279	210	120	130	7
50	52	305	225	140	140	8.3
56	60	356	240	150	150	12.5
64	70	432	290	185	180	19.5
76	81	483	320	225	220	29
82	92	559	375	280	240	35
90	105	610	410	280	250	42
120	120	660	450	280	280	58

C

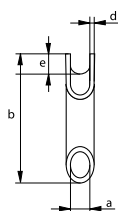
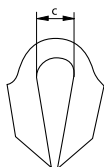
## Thimbles

### Tubular type

- Material: mild steel
- Finish: painted
- Certification: 2.1



P-6190



diameter wire rope	diameter	length	width inside	thickness	height	weight each
mm	a mm	b mm	c mm	d mm	e mm	kg
10	12	90	23	4	8	0.23
12	15	105	27	5	10	0.4
14	17	115	27	5	10	0.5
16	19	120	32	5	12	0.6
18	22	140	35	5	15	0.75
22	25	180	45	6	16	1.4
24	28	180	45	7	16	1.75
26	30	195	47	7	18	2
32	35	215	60	7	22	2.5
36	40	212	70	9	36	3
38	45	260	70	7	27	3.5
44	50	280	75	7	28	4.2

C

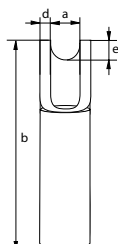
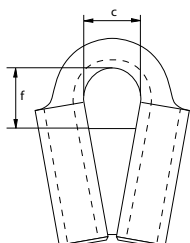
## Thimbles

### Tubular type with welded plate

- Material: mild steel
- Finish: painted
- Certification: 2.1



P-6195



diameter wire rope	width groove	length	width inside	thickness	height	length inside	weight each
mm	a mm	b mm	c mm	d mm	e mm	f mm	kg
10	12	84	23	4	8	24	0.26
12	15	95	27	5	10	31	0.42
14	17	100	27	5	10	38	0.48
16	19	112	32	5	12	46	0.61
18	22	125	35	5	15	47	0.95
22	25	150	45	6	16	61	1.33
24	28	157	45	7	16	56	1.67
26	30	170	47	7	18	68	1.96
32	35	190	60	7	22	73	2.43
36	40	212	70	9	26	80	4.32
38	45	228	70	7	27	94	3.67